

UNIVERSITY
OF COLOGNE

FACULTY OF
MANAGEMENT, ECONOMICS
AND SOCIAL SCIENCES

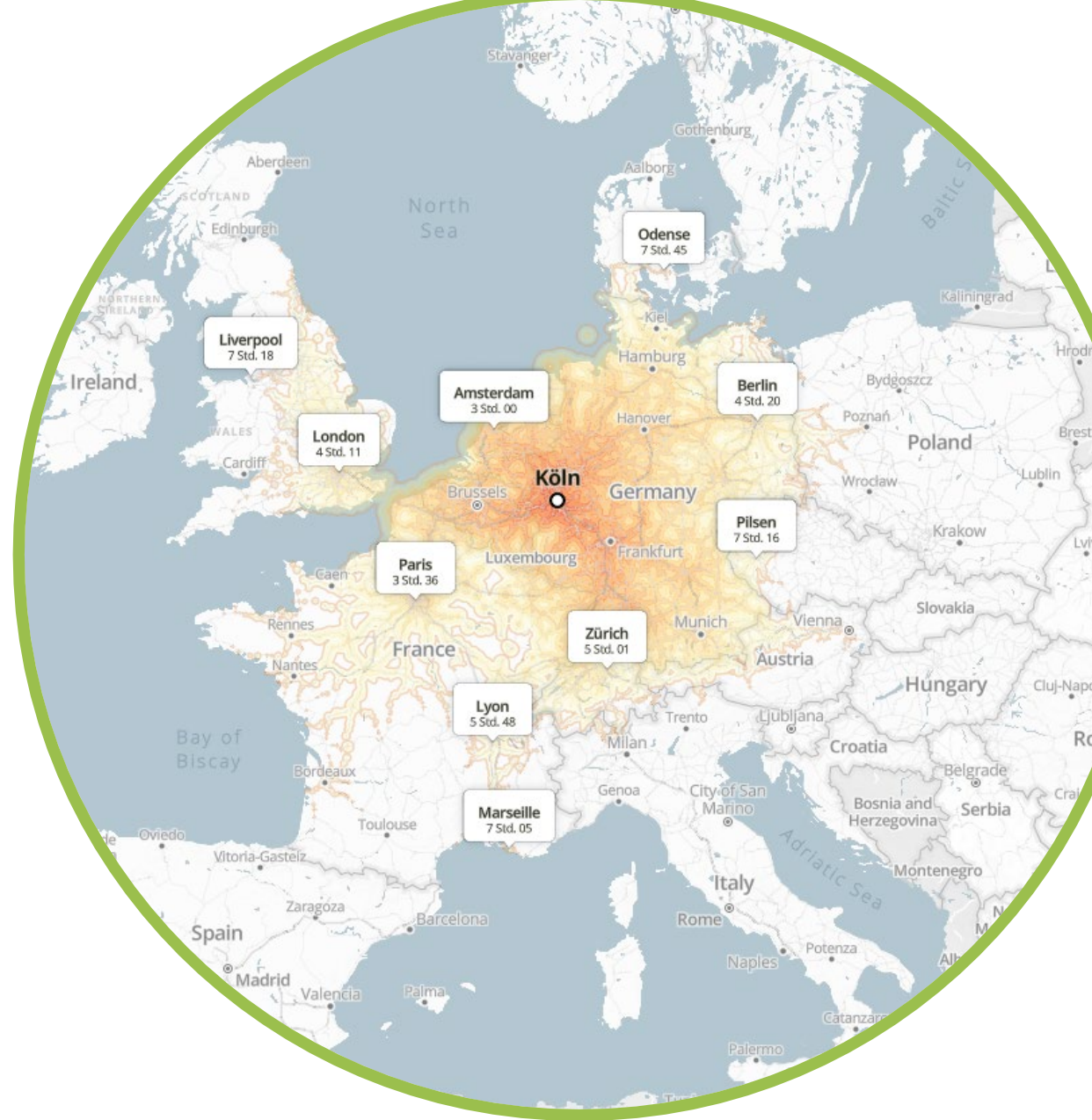


COLOGNE

At the heart of Europe

Within **8 hours of train ride**, you can reach

- the **Scottish border**,
- the **Atlantic coast** of Bordeaux,
- the **Mediterranean coast** in Marseille,
- the **Baltic island of Rügen**
- the historic centre of **Vienna**



Today's ideas.
Tomorrow's impact.



COLOGNE IN GERMANY



COLOGNE

Cologne is located **within a metropolitan area of over 10 million**, which makes it easy for students and faculty to collaborate with great companies

Germany **shares borders with nine countries**, more than any other country in Europe, making it an ideal starting point for exploring the continent

Students receive a free transportation ticket valid for regional transport in Germany, making it possible to **visit lots of exciting cities for free!**

COLOGNE IN GERMANY

With around 100,000 students and a lively start-up culture, Cologne is the economic and scientific centre of the Rhineland region

Cologne is proud of its reputation as a vibrant and tolerant city. With 18% non-German residents, it is both multicultural and strong in its local identity

The city has a pulsating nightlife, bars, restaurants and breweries. In fact, Cologne has the highest number of pubs per capita in all of Germany and even has its own special beer – Kölsch!

” The city is amazing, with an international vibe, great food, and the friendliest locals in all of Germany. If you’re looking for a place to have an amazing adventure, then I cannot recommend this programme highly enough.
Nathan, The University of Texas at Dallas



Today's ideas.
Tomorrow's impact.



THE UNIVERSITY OF COLOGNE

Founded in 1388, it is one of the **oldest and most prestigious** European universities

Excellent international reputation due to its outstanding scientific achievements and the **high quality and diversity of its degree programmes**

Has produced several **Nobel and Leibniz Prize winners** and is part of the only **economic cluster of excellence** in Germany



Today's ideas.
Tomorrow's impact.



Photo: Lisa Beller

THE COLOGNE WISO FACULTY

Only German member of the internationally renowned **CEMS*** and **PIM**** networks

*Global Alliance in Management Education **Partnership in International Management

Over **160 partnerships** with world-class universities in **53 countries**

Comprehensive range of **bachelor and master courses taught in English** and a number of bachelor courses taught in German

Interdisciplinary course offer across 12 areas of Management, Economics and Social Sciences



Today's ideas.
Tomorrow's impact.



Photo: Dustin Preick

THE COLOGNE WISO FACULTY

#40 worldwide

FINANCIAL TIMES RANKING
"Masters in Management"
Financial Times Master in Management Ranking 2024

TOP 3

GERMAN FACULTIES
FOR BUSINESS
ADMINISTRATION
SHANGHAI RANKING 2023

TOP 5

GERMAN FACULTIES
FOR ECONOMICS
SHANGHAI RANKING 2023



Photo: Lisa Beller



Today's ideas.
Tomorrow's impact.

THE COLOGNE WISO FACULTY

OUR MISSION



Developing knowledge and people for a better world

We conduct rigorous and relevant scientific research in management, economics, and the social sciences, supporting people to grow and reach their full potential. We actively engage external stakeholders in our research and teaching to make a positive difference in the world.

OUR VISION



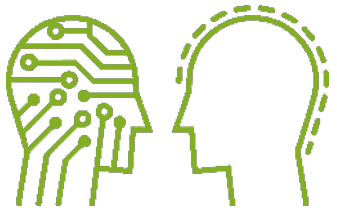
We are among the leading academic institutions in management, economics, and the social sciences in Europe, measured in terms of quality and visibility of our research in selected fields, education and preparation of open-minded students for future careers, and the impact that our activities have on people, organisations, society, and the planet.



Today's ideas.
Tomorrow's impact.



KEY RESEARCH INITIATIVES



ANALYTICS &
TRANSFORMATION



DEMOGRAPHY &
SOCIAL INEQUALITY



BEHAVIOURAL
MANAGEMENT
SCIENCE



SUSTAINABLE SMART
ENERGY & MOBILITY



Today's ideas.
Tomorrow's impact.



FACTS AND NUMBERS

Founded in 1901 as a School of Commerce, we have extended our scope to Economics, Sociology, and Politics and have now over a century experience in the education of new generations of business professionals, economists, sociologists, and political experts.

70

Student Associations

200+

Corporate partners

23

Study programmes

160+

Academic exchange partnerships

500+

Guest students per year

3

Doctoral Programmes

8,000

Degree seeking students



Today's ideas.
Tomorrow's impact.



Photo: Dustin Preick

CORPORATE RELATIONS

Strong company involvement in research projects and seminars and business projects

Over **200 corporate partners**

International congresses, e.g. **World Business Dialogue**, largest international student-run business convention

The **WiSo-Career-Service** acts as a central point of contact for all matters relating to work experience and graduate employment.



Today's ideas.
Tomorrow's impact.



STUDY PROGRAMMES

Bachelor programmes

(3 years)

- BSc Business Administration
- BSc Economics
- BSc Social Sciences
- BSc Management, Economics and Social Sciences
- BSc Information Systems
- BSc Health Economics
- BA Economic Education

Master programmes

(2 years)

- MSc Business Administration
(Supply Chain Management, Accounting and Taxation, Corporate Development, Marketing, Finance)
- MSc International Management (CEMS MIM)
- MSc Business Analytics and Econometrics
- MSc Economics
- MSc Economic Research
- MSc Information Systems
- MSc Sociology
(Social Research, Social and Economic Psychology)
- MSc Health Economics
- MA Political Science
- MSc Economic Education



Today's ideas.
Tomorrow's impact.



ACADEMIC CALENDAR

FALL TERM

Sep	Oct	Nov	Dec	Jan	Feb
Presemester German language courses	Fall term / lecture period including exams				
	Early Leaver programme				

SPRING TERM

Mar	Apr	May	Jun	Jul	Aug
Presemester German language courses	Spring term / lecture period including exams				



PIM & CEMS STUDENT AND ALUMNI CLUB

The PIM & CEMS Club aims to create a **strong network of students and alumni** and enhance international understanding

Social events such as running cocktails, game nights and bike tours give you plenty of opportunities to meet new people and have some fun!

Meet with companies across industries in events such as speed recruiting, rotation dinners and workshops, and benefit from special job and internship offers



” Apart from the obvious quality of the WiSo Faculty, meeting and joining the members of the PIM & CEMS Club as early as possible ensured that I never stopped for a second and spent every day of my semester having an absolute blast of fun.

Lukas, Prague University of Economics and Business



Today's ideas.
Tomorrow's impact.



YOUR STAY IN COLOGNE

Estimated monthly living costs:

Housing: € 400–700

Food, leisure activities, reading materials, health insurance:

€ 400–550

Social contribution (one-time payment) – transport and student activity fee, includes access to subsidised food in the dining halls (no tuition fee): approx. € 300 per term

Social activities organised by the PIM & CEMS Club and **(inter)cultural events** organised by ZIB WiSo

Intensive **German language courses** or weekly German language courses throughout the term **free of charge**



” Sunny days at the Rhine, visiting the Cathedral, nights with the PIM & CEMS Club, Karneval, Kölsch, one of the biggest universities, highly qualified education, canteen like a restaurant, lovely people from all around the world. It was my second home and will be yours too, trust me! Highly recommended!

Robert, Corvinus University of Budapest



Today's ideas.
Tomorrow's impact.



INTERNATIONAL STUDENT SUPPORT

The ZIB WiSo **Incomings Team** is there to support you with any academic issues before and during your exchange term

Including

Enrolment support and **course registration support**

Welcome days – **Orientation events before classes** including academic information session, guided campus tours and (inter)cultural events

Buddy Programme – **Support from Cologne student 'buddies'** during your stay at the WiSo Faculty



Today's ideas
Tomorrow's Impact.



Click here for
some
experiences
of our
incoming
students...



...or here to
get to know
our campus...



...or visit our
website for more
information!



CONTACT

Incomings Team

International Relations Center (ZIB WiSo)

incomings@wiso.uni-koeln.de

Office hours

Not in Cologne?: [Click here to schedule](#)

In Cologne: [Click here to schedule](#)



Today's ideas.
Tomorrow's impact.

